

# St. Mary's Soil Conservation District

2016 Annual Report  
April 2017

Soil Stewardship Week  
April 30th - May 7th

## 2016 Cooperator of the Year Dot Morgan & Jeffrey Raley, Jr.

Dot Morgan owns two farms in Mechanicsville, Maryland totaling approximately 100 acres. On Farm 1257, she farms with her son Ernest who manages a small cow/calf herd and feedlot and they lease another 900 acres of farmland and raise corn, soybeans, small grains, and hay. On Farm 1428, located on Hidden Valley Lane, she works with her grandson Jeffrey Raley, Jr. On this farm, Jeffrey manages a cow/calf herd with 20 brood cows and a small feedlot.

This farm has some rugged terrain, and to better manage their herd and to control erosion issues, Dot as the farm owner, and Jeffrey as the farm manager, approached the District for assistance to fix their erosion problems. A Soil Conservation Water Quality Plan was developed which listed multiple management and structural best management practices to be installed and implemented to minimize soil loss and control nutrient runoff from the pastures. A roofed waste storage structure with roof runoff control had previously been installed on the farm to manage their manure, but because of the steep slopes and erodible soils, they had to address erosion issues caused by the cattle.

Dot and Jeffrey took advantage of both the Maryland Department of Agriculture Cost Share Program (MACS) and the Natural Resources Conservation Service Environmental Quality Incentive Programs (EQIP) to cost share the multiple BMPs that were installed. The MACS Program assisted with an agricultural well, one watering facility with a 20 foot by 20 foot concrete pad, 3959 feet of stream fencing to exclude cattle from waters of the State, a 402 foot long by 12 foot wide travel lane, another 490 feet of fencing was installed along the travel lane and waste storage structure to exclude cattle from steep eroding slopes and 0.2 acres of critical area seeding was planted to stabilize eroding areas. Through the EQIP Program, and to complement the MACS BMPs, a pumphouse, a second watering facility with a 20 foot by 30 foot heavy use area, and 30 feet of pipeline were installed.

Additional BMPs planned for 2017, pending availability of Maryland Department of Agriculture MACS funding and EQIP funding are an additional watering facility with a 20 foot by 20 foot concrete pad, 680 feet of waterline, and 800 feet of cross fencing to divide a 22 acre pasture to provide rotational grazing following a grazing management plan.



Stanley Boothe, Chairman St. Mary's SCD presenting Cooperator of the Year Award to Dot Morgan and Jeffrey Raley, Jr. at the District's Annual Cooperators Dinner

### Inside this issue:

District Background	2
Highlights	2
Agricultural & Urban Accomplishments	3
Outreach & Education	4
Coloring Contest	5
New District Conservationist	5
Cover Crop Program	6
Rental Equipment Program	6
Contractor of the Year	7
District Celebrates 75 Years	7

### Special points of interest:

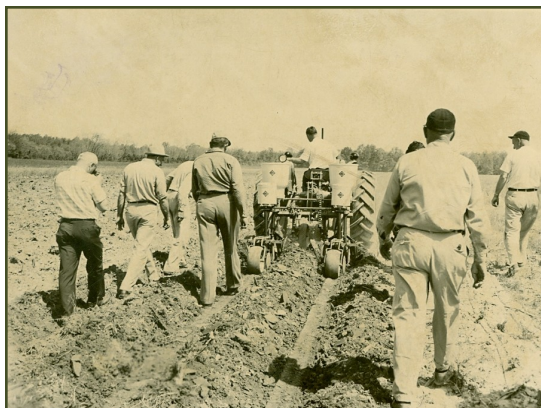
- 2016 Cooperator of the Year
- Meet Rachel Yeatman, New District Conservationist
- Cover Crop Program Changes
- St. Mary's SCD Equipment Rental Program Reminders
- St. Mary's SCD Celebrates 75 years

## District History and Background

The St. Mary's Soil Conservation District is an independent political subunit of state government which was created on November 14, 1941. The legal charter was issued by the state of Maryland on January 5, 1942.

The District is governed by a board of supervisors who are local county residents. Members are appointed to five (5) year terms by the State Soil Conservation Committee, with recommendations from the County Commissioners, Farm Bureau, and Co-operative Extension Service. There are five voting members, one non-voting member and three associate members. These supervisors regularly attend meetings to keep informed on local, state and national issues, which could have an impact on farmers, landowners and residents within our area. The District's technical staff is provided by the USDA, Natural Resources Conservation Service, the Maryland Department of Agriculture and from the District itself.

Each year the District prepares detailed budget requests for administrative and operating funds from MDA and St. Mary's County to meet its goals and objectives. In calendar year 2016 the District received operating funds of \$73,946 from the county and \$109,500 from MDA. Additional support provided by MDA and NRCS is in the form of staff (\$422,310) and cost share support for best management practices installed.



*Mulch tiller planting corn during minimum tillage demonstration sponsored by St. Mary's SCD on May 9, 1964*

## 2016 District Highlights

- Held 12 monthly meetings, which were scheduled for the first Thursday of each month and are open to the public
- Reviewed Memorandums of Understanding between the District and cooperating agencies at regular Board Meetings
- Attended the Winter and Summer Maryland Association of Conservation Districts (MASCD) Meetings
- Attended quarterly MASCD Board of Directors Meetings
- Maintained membership in state and national soil conservation district associations
- Cooperate with Maryland Department of the Environment on the local sediment control program
- Supervisor Bobby Cooper and District Manager Bruce Young serve on the Southern Maryland RC&D Board
- Member of the county's Technical Evaluation Committee for site and subdivision approval
- Advisory member of St. Mary's County Agriculture, Seafood, & Forestry Board
- Tom Koviak, and Mike Russell are certified as Nutrient Management Consultants by the MDA
- Member of the local WIP II team
- Developed a workload analysis and a plan of operations for fiscal year 2016
- Maintained a list of contractors that do conservation work
- Assisted landowners in making determinations for acceptance into Agricultural Land Preservation Programs
- Hosted Southern Maryland Dinner Meeting for Area 2 Soil Conservation Districts
- District staff are members of the State Envirothon Committee and Co-Chair for the NCF-Envirothon Maryland 2017.
- Bruce Young is a representative on the Maryland Cost Share Technical Advisory Committee
- Member of MASCD Endowment Committee
- Held a Kick-Off Meeting with core partners to initiate local funding pool through NRCS EQIP Program.
- Attended Southern Maryland Agriculture Development Commission Agriculture Summit
- Testified in support of HB 1110 at House hearing on funding of 2010 Trust Fund for District Staff
- Presentation to St. Mary's BOCC regarding delegation of E&S Authority
- Participation with Watershed Stewards Academy Steering Committee
- Registered District for Public Information Act Legislation



## 2016 District Accomplishments

### Agricultural Accomplishments

Waste Storage Facility	1 no.
Conservation Cover	189.0 ac.
Conservation Crop Rotation	1866.1 ac.
Residue and Tillage Management, No-Till	184.5 ac.
Cover Crop	1275.1 ac.
Critical Area Planting	2.6 ac.
Residue and Tillage Management, Mulch Till	1810.8 ac.
Diversion	150 ft.
Sediment Control Pond	1 no.
Streamside Fencing (10'-34')	6211 ft.
Streamside Fencing (35'+ tree buffer)	325 ft.
Fencing (Non-Streamside)	2450 ft.
Field Border	3.7 ft.
Filter Strip	55.4 ac.
Waterway	2.4 ac.
Lined Waterway or Outlet	91 ft.
Mulching	0.1 ac.
Forage Harvest Management	22.9 ac.
Forage and Biomass Planting	145.8 ac.
Livestock Pipeline	1484 ft.
Prescribed Grazing	13.5 ac.
Pumping Plant	2 no.
Heavy Use Area Protection	0.01 ac.
Nutrient Management	2140 ac.
Integrated Pest Management	59.6 ac.
Watering Facility	3 no.
Waste Recycling	82.5 ac.
Water Well	2 no.
Forest Stand Improvement	577.2 ac.
Seasonal High Tunnel System	2111 sq. ft.
Conservation Plans	85 for 7058 ac.
76 Farmers Installed 265 BMP's to protect 8021 acres	



### Urban Accomplishments

Approved Standard Plans	213
Approved Engineered Plans	306
Exemptions	254
TEC Reviews	47
Site Inspections	87
Forest Harvest E&S Plans	18
Pre-Construction Meetings	149

## Outreach & Education

- ◇ Met with congressional delegates concerning legislation that would affect St. Mary's County
- ◇ Sponsor of the Southern Maryland Crops Conference



- ◇ 276 people attended the 63rd annual cooperators' dinner meeting. Governor Hogan attended and presented Governor's Citation to Cooperator of the Year.

- ◇ Sponsored the St. Mary's County Science and Engineering Fair
- ◇ Sponsored and coordinated the county envirothon program. Three (3) public high schools participated. County winner competed at the State Envirothon in Frederick County. Team placed 9th at MD Envirothon



- ◇ St. Mary's Ag Center's Edible Garden created in June by District Employee Jane Sanders and the University of Maryland Master Gardeners Program

- ◇ Participated in Town of Leonardtown Earth Day activities
- ◇ Participated in the STEM Bio-Blast Field Day
- ◇ Retain records of approved sewage sludge permits in the District office
- ◇ Published news articles in the local paper showcasing District programs and accomplishments
- ◇ Actively promoted and assisted landowners in applying for MACS and EQIP cost-share
- ◇ Participated in the MASCD Coloring. Presented cash awards to the top three winners in each category
- ◇ Promoted the use of a manure spreader purchased with grant funds from the Chesapeake Bay Trust
- ◇ Participated in Quality Review of installed best man-

agement practices

- ◇ Cooperated with the University of Maryland Extension in the development of Nutrient Management Plans
- ◇ Sponsored University of Maryland Soil Judging Team
- ◇ Member of the Mentoring Program for high school students at the Forrest Career and Technology Center
- ◇ Co-Sponsored a Board of County Commissioners Agriculture Tour with Extension and DECD Ag & Seafood Council
- ◇ Member of the St. Mary's County Curriculum for Agricultural Science Education (CASE) program advisory team
- ◇ Held six (6) staff meetings throughout the

year

- ◇ Promote conservation tillage through the lease of the District owned no-till drills
- ◇ Participated in the Easter Festival at Fairgrounds
- ◇ Participated in Town of Leonardtown Christmas Tree Lighting Activities
- ◇ Presentation to 7th District Optimist Club on District operations and programs
- ◇ WXMD radio interviews with Calvin Carter on the Envirothon and soil conservation district history and programs
- ◇ Participated with DNR Forester on new timber harvest standards and specifications to local harvesters
- ◇ Gave a presentation to LEAD Maryland Class IX on living shorelines at Historic St. Mary's City
- ◇ Hosted a NRCS Student Leadership Council Intern
- ◇ Gave a presentation to the Leonardtown Rotary Club on District and RC&D Programs
- ◇ Had information booth at the St. Mary's County Fair in September

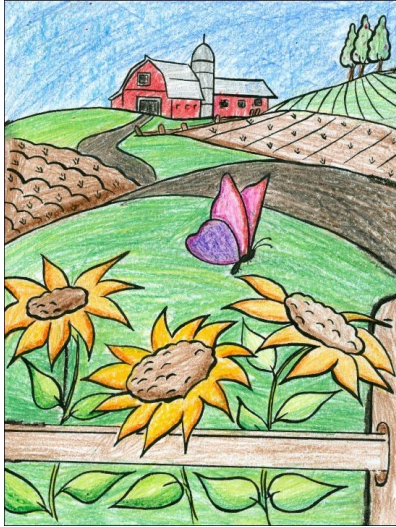


- ◇ Participated in Earth Day event in Leonardtown in April. Funds raised help support local Envirothon Program.



## Maryland Association of Soil Conservation Districts Coloring & Poster Contests

Each year the St. Mary's Soil Conservation District sponsors a coloring contest for Kindergarten through fifth grade. The District awards cash prizes for first, second, and third place drawings in each of three classes. The pictures are judged on neatness, attention to detail, and how well directions are followed. The first place winners in each class are then forwarded to the MASCD state contest to be judged against the winners from the other Maryland Districts.



### Coloring Contest

#### **Class A (K – 1<sup>st</sup> Grades)**

- 1<sup>st</sup> Place - Isabella Derisavi, Greenview Knolls Elementary  
 2<sup>nd</sup> Place - Brooklyn Conner, Oakville Elementary  
 3<sup>rd</sup> Place - Nathan Anderson, Chesapeake Public Charter School

#### **Class B (2<sup>nd</sup>-3<sup>rd</sup> Grades)**

- 1<sup>st</sup> Place - Gretchen Brady, Evergreen Elementary  
 2<sup>nd</sup> Place - Mason Simonds, Chesapeake Public Charter School  
 3<sup>rd</sup> Place - Katie Anderson, Chesapeake Public Charter School

#### **Class C (4<sup>th</sup>-5<sup>th</sup> Grades)**

- 1<sup>st</sup> Place - Sarah Fore, St. Michaels School  
 2<sup>nd</sup> Place - Abby Albano, Evergreen Elementary  
 3<sup>rd</sup> Place - Janae Denise Carr, Greenview Knolls Elementary

### District Welcomes New District Conservationist

Hello St. Mary's County farmers, cooperators, and agriculture supporters. I want to take this opportunity to introduce myself. My name is Rachel Yeatman and I am the new NRCS District Conservationist in Calvert, Charles, and St. Mary's counties. I look forward to being here permanently as I have been on several short term details in the last few years to the area. While I have just moved here, my family is from St. Mary's and I spent my childhood coming to visit and having fun crabbing in the summer. I am a Maryland native and have worked for nearly 15 years as a Soil Conservationist for NRCS in Cecil County. Prior to this I worked for Maryland Cooperative Extension as a Nutrient Management Advisor. I received my B.S. degree from Salisbury University with a major in Biology with a plant concentration and my M.S. in Environmental Science-Biological Resource Management from Towson University.



I look forward to continuing, as well as expanding, the federal technical and financial assistance available to help you maintain, improve, and restore the natural resources on your agricultural lands. Continuing the success of last year's Environmental Quality Improvement Program (EQIP) Local Work Group, NRCS has once again allocated \$100,000 in financial assistance available to producers in each of the Maryland Districts. This means projects will only be competing within their county for funding instead of statewide. Statewide funding is also available to implement Best Management Practices under several federal programs. EQIP sign-up is year round with contract funding once a year. For more information and details on these programs please contact me or the local field staff.

## 2017/2018 Cover Crop Program

The 2017/2018 Cover Crop Program has been fully funded at 22 million dollars state-wide. The sign-up period is Wednesday, June 21st through Monday, July 17th and is expected to be very similar to last years program in regards to payment rates and incentives. However, the program will have major changes for the District in how we assist each applicant with sign-up and certifications. The program will now be administered though a web based application that will require electronic signatures and submissions to the Maryland Department of Agriculture. We are hopeful that this new system will aide in a more streamlined process but there will be some growing pains! Please be patient with us as we assist each of you during sign-up and the fall and spring certifications.



## Equipment Rental Program Reminders and Updates

The District has offered the equipment rental program to farmers in St. Mary's County since 1992. Over the years we have replaced equipment as needed and had to make a few changes to the program's rental policies and procedures. To be sure that everyone is aware of the current rental information, here are some reminders and updates:



6 Ft Frontier Overseeder  
Purchased September 2010  
\$25/day \$10/ac SMADC



10 Ft John Deere No-Till Drill  
On Order - Expected April 2017  
\$25/day \$10/ac SMADC



12 ft Great Plains Turbo Till  
Purchased September 2010  
\$25/day \$10/ac SMADC



7 Ft Great Plains No-Till Drill  
Purchased September 2010  
\$25/day \$10/ac SMADC



Shaver Post Driver  
Purchased September 2010  
\$150/day SMADC



16 Ft Gehl Manure Spreader  
Purchased December 2000  
\$25/day \$10/ac

- The District sold its 2012 John Deere 10 Ft drill in March and is awaiting a new 2017 John Deere 1590 10 Ft No-Till Drill. The new drill will be equipped with a grass seed box attachment with 7.5 inch spacing
- A \$50.00 deposit is required on all rental equipment each time equipment is rented and prior to its use. Lessees must stop in the District office to pay the deposit, sign a lease agreement, and provide current proof of liability insurance on tow vehicle prior to renting
- The minimum fee assessed to lease District equipment is \$50.00
- Equipment is available to landowners and farmers within the boundaries of St. Mary's County. Any requests for exception must be submitted in writing to the District Board of Supervisors for consideration

For rental information, contact the District at 301-475-8402 ext 3 or visit our website at [www.stmarysscd.com](http://www.stmarysscd.com)



## 2016 Contractor of the Year James Goddard Excavating

James Goddard Excavating was selected as the 2016 Contractor of the Year for the work that he and his crew did to retrofit a pond embankment that was not originally constructed to meet Maryland Standards and Specifications (MD 378). The landowner received District assistance to redesign the dam and James was hired by the landowner to perform the construction.

In order for the dam and pond to meet Maryland Specifications; the dam had to be lowered 10 feet, a new principal spillway and sand filter installed, and through the entire length of the dam, a 24 foot deep core trench had to be constructed. Initial work required dewatering of the pond and the removal of over 1800 cubic yards of material to lower the dam height to below 20 feet. Once this was completed, a trench was excavated along the entire length of the dam and clay fill was hauled in and compacted to construct the cutoff (core) trench. Once the cutoff trench was about 75 percent completed a sand filter diaphragm was installed. As the sand filter was constructed, it was flooded with water for compaction, and the new principle spillway pipe was installed. The new pipe consisted of 130 feet of 24 inch plastic pipe with watertight gaskets.

The finished dam is 20 foot high, 262 feet in length (including the emergency spillway) and is 40 feet wide at the top. The side slopes exceed the minimum standards and are 4:1 on both the front and back of dam. The total disturbed area was 1.8 acres. At any one time, there were 3 bulldozers, 1 track loader, and an excavator all moving material on site.

A reconstruction project is much harder to build and James and his employee Red were able to complete the dam to specification without any problems.

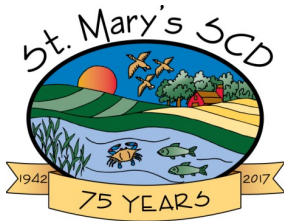
## District Celebrates 75 Years of Service to the Citizens of St. Mary's County

On January 5, 1942, the legal charter for the St. Mary's Soil Conservation District was issued by the State of Maryland. On February 24, 2017 the District celebrated 75 years of conservation as part of our 64th Annual Cooperators Dinner Meeting. The meeting was held at the Hollywood Fire Department and the evenings activities included a picture presentation of historical and current best management practices, district supervisors and staff, and information, education, and outreach activities.



The District Supervisors received recognition for outstanding service and accomplishment to the citizens of St. Mary's County in the form of proclamations and citations from Governor Larry Hogan, Congressman Steny Hoyer, Senator Ben Cardin, Secretary of Agriculture Joe Bartenfelder, Maryland House of Delegates, Maryland Senate, NRCS State Conservationist Dr. Terron Hillsman, and the St. Mary's County Commissioners.

A wonderful dinner was catered by Thompson's Seafood and Catering and the after program entertainment was the California Ramblers Bluegrass Band.



26737 Radio Station Way  
Suite B  
Leonardtown, MD 20650  
Phone: 301-475-8402 ext 3  
Fax: 301-475-8391

## Cover Crop Reminders

- ♦ Kill down can occur anytime after March 1st
- ♦ Must certify no later than June 2nd
- ♦ Sign-Up Period for 2017/2018 Program is June 21 - July 17, 2017

# To:

*All NRCS and SCD programs and services are offered on a nondiscriminatory basis, without regard to race, color, national origin, religion, sex, age, marital status, or handicap.*

[www.stmarysscd.com](http://www.stmarysscd.com)

## Cooperating Agencies, Supervisors, & Staff

### STATE OF MARYLAND

Critical Area Commission  
State Highway Administration  
State Soil Conservation Committee  
Department of Agriculture  
Department of the Environment  
Department of Natural Resources  
University of Maryland Extension

### ST. MARY'S COUNTY

Board of County Commissioners  
Department of Health  
Board of Education  
Metropolitan Commission  
Dept. of Public Works & Transportation  
Dept. of Land Use & Growth Management  
Dept. of Recreation and Parks  
Dept. of Economic and Community Develop.

### United States Government

Army Corps of Engineers  
Natural Resources Conservation Service  
Farm Service Agency

### Others

Leonardtown Commissioners  
Historic St. Mary's City Commission  
MD Assoc. of Soil Conservation Districts  
Nat'l Assoc. of Conservation Districts  
Southern Maryland RC&D  
St. Mary's County Farm Bureau  
St. Mary's County Fair Board

### The St. Mary's SCD Board of Supervisors

Stanley Boothe - Chairman  
Alfred Knott - Vice-chairman  
Donald Ocker - Treasurer  
Luther Wolfe - Member  
Bobby Cooper - Member  
Ben Beale - Secretary  
Jeffrey Raley, Sr. - Associate  
Carl Dyson - Associate  
Bobby Wise - Associate

### St. Mary's Soil Conservation District Staff

Bruce Young - District Manager  
Haley Carter - Program Manager  
Jane Sanders - Erosion & Sediment Control Specialist  
Nancy LaRoche - Technician  
Glenn Gass - Contract Engineer

### Natural Resources Conservation Service Staff

Rachel Yeatman - District Conservationist  
Susan Lamb - Resource Conservationist  
Gail Myers - Civil Engineer  
Valinda Clark - Program Support Specialist

### Maryland Department of Agriculture Staff

Tom Koviak - Ag Resource Conservation Spec.  
George Beavan - Ag Resource Conservation Spec.  
Sara Lewis - Ag Resource Conservation Spec./Equine  
Mike Russell - Engineering Technician  
Luke Mudd - Engineering Technician  
Sara Burbage - Secretary